

Safeguarding Flow Chart – Reporting Concerns About a Child and/or Vulnerable Adult

Date last reviewed: May 2022

Next review due before: 31st May 2023

Persons responsible: Caroline Harrower and Caroline Bolton

This flow chart in figure 1 represents the process for reporting safeguarding concerns which are not linked to the National Breastfeeding Helpline.

Always

- Seek appropriate advice and support.
- Discuss any concerns with, at least, the ABM Safeguarding Leads within 24 hours.
- Write information down as soon as possible.

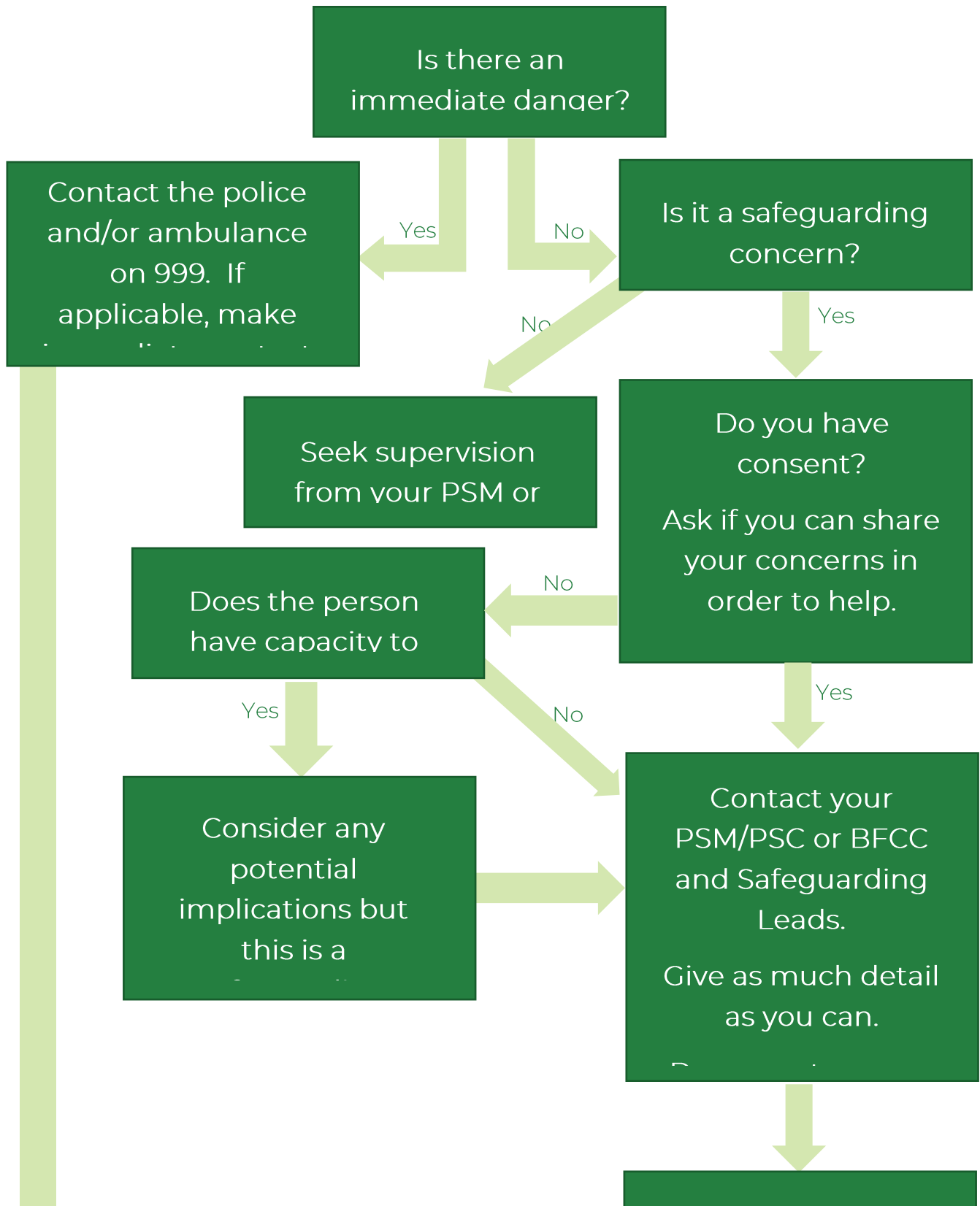
Never

- Do nothing.
- Assume that someone else or another agency will or is acting.
- Attempt to resolve the matter yourself.

Contacts

- Your PSM/PSC or BFCC
- ABM Safeguarding Leads (email as primary route, telephone numbers in an emergency:
 - Caroline Bolton: c.bolton@abm.me.uk 07702553650 / 01904 702703
 - Caroline Harrower: c.harrower@abm.me.uk 07834453964
 - Call 999, the NSPCC 0808 800 5000, or your local Safeguarding Board.

Figure 1



Contacting Us

If you have any questions about this guidance, you can contact the administration office by the following means:

By telephone: 0844 412 2948

By post: PO Box 1629, Bedford, MK42 5EF

By email: admin@abm.me.uk

All ABM email addresses are in the format of initial.surname@abm.me.uk

Alternative Formats

If you require a copy of this guidance in an alternative format, please contact admin@abm.me.uk and we will do our best to meet your needs.